

## Lung scintigraphy



Universitätsklinik für  
Nuklearmedizin  
PET Diagnostik Bern AG

Klinikdirektor  
Prof. Dr. A. Rominger



## Dear Patient

On behalf of our hospital and clinic management team, we would like to welcome you to the Inselspital Bern. You have been referred to the Department of Nuclear Medicine for an outpatient nuclear medicine procedure. This information leaflet contains further details on the examination preparation and procedure.

## General information

Nuclear medicine involves the use of radioactive substances to conduct functional and localization diagnostics for organs, tissues and systems, and treatment using open radionuclides. Radioactive tracers are used to visualise metabolic processes which enables the diagnosis of organ dysfunction without the need for invasive procedures. Camera systems allow the function of organs or body systems to be assessed externally.



## Registering for your appointment

- Please bring your Swiss health insurance card with you to your appointment.
- To register your data in the Insel system, please go to the Information Desk/ Patient Reception at the main entrance half an hour before your appointment. You will be given a number there. Once this number is called out, you will be told which cabin to go to for admission.
- Alternatively, you can register using our convenient online Patient Check-In via the Inselspital's homepage up to 48 hours before your examination appointment: [www.insel.ch/check-in](http://www.insel.ch/check-in)
- The examination will take place in the INO building, Level B. From the main entrance, follow the red dotted line on the floor to Waypoint 5. Take the elevator to Level B and then continue to follow the red dotted line to Waypoint 8 (Reception, Department of Nuclear Medicine).



## **Where does the examination take place?**

Department of Nuclear Medicine

INO B, North

CH-3010 Bern

Tel.: 031 632 24 54, Fax: 031 632 31 37

## **Information on the procedure**

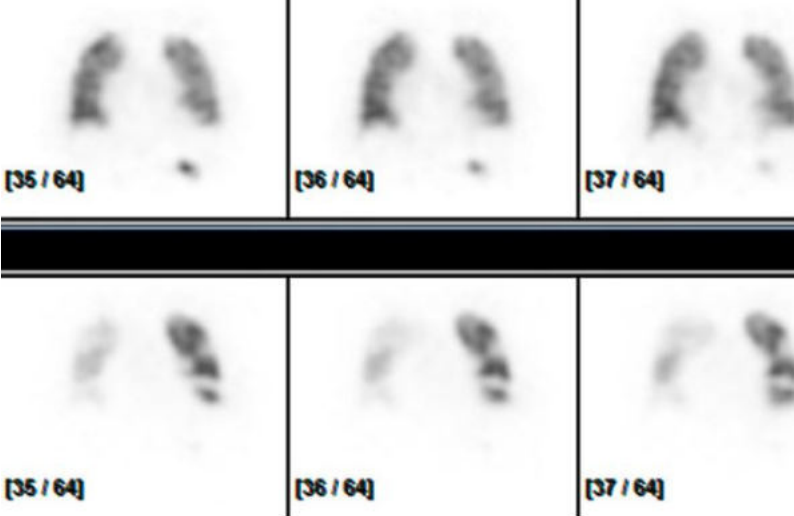
### **Purpose of the examination**

Lung scintigraphy is used to diagnose pulmonary embolism, pulmonary dysfunction and to quantitatively assess lung function.

### **Examination procedure**

The procedure is divided into two parts: a ventilation scan and a perfusion scan. In the ventilation scintigraphy, the circulation of air in the lungs is examined. For this scan, you will inhale a small amount of a low-level radioactive gas. The distribution of the gas is then recorded by the gamma camera.

In a second step, the perfusion scintigraphy is then carried out to examine the regional blood flow in the lungs. A small amount of a low-level radioactive



substance is injected into a vein in your arm and further images are taken by the gamma camera (the total duration of both parts of the examination is approximately 45 minutes).

### **Preparation for the examination**

No special preparations are required for the procedure. You can take your medication as normal and do not need to fast.

### **Risks and side effects**

There are no side effects associated with the substances used in the procedure. If you have a protein intolerance, please inform us in advance. Other allergic reactions are extremely rare. The procedure can be carried out safely in children and pregnant women.



## **Exposure to radiation**

The radiation exposure from this nuclear medicine procedure is equivalent to approximately half of the annual natural radiation exposure and is not influenced by the duration of the examination. A special procedure can be used for children and pregnant women which halves the radiation exposure, but extends the time required for the examination.

## **After the examination**

- On the day of the examination you should avoid prolonged close contact with children under 16 and pregnant women. A distance of 1m is sufficient.
- Breastfeeding women should refrain from breastfeeding for 12 hours and discard any milk from within this time window.



## Please note the following

If you need to cancel your appointment, please call to inform us (031 632 24 54 ) at the latest by 12:00 one working day prior to your scheduled examination. Failing this, we reserve the right to invoice you for the costs incurred.

**Department of Nuclear Medicine**  
Inselspital, Bern University Hospital  
CH-3010 Bern  
Tel. 031 632 24 54

[www.nukmed.insel.ch](http://www.nukmed.insel.ch)

